

# RICOH

## Revolutionary Multitasking in Black & White and Colour



**Aficio™ MP C1500SP**

# True Multifunctionality & High Impact Colour

Today's business reality is two fold: while competition is becoming fiercer, more and more companies are putting their budgets first. The buzzword is multitasking: it goes for employees as well as equipment. With Ricoh's Aficio™MP C1500SP you are set to power up your entire office workflow and meet any challenge! High quality printing, copying, scanning and faxing: this all-in-one office partner handles it all and more... Add fast and affordable colour to the package and the road to business success lies right open!

- Stunning colour output thanks to innovative technology
- Top performance: 15 ppm B/W – 6 ppm colour
- Duplex copying, scanning and printing
- All-in-one: print, copy, scan and fax from one device
- Exceptional media versatility
- Guaranteed security and excellent networking



# Handling Your Every Document Processing Need

The Aficio™MP C1500sp incorporates great overall capabilities to guarantee an efficient workflow. Offering excellent output quality, user friendly operation, advanced printing functionalities and the added value of colour, this device will efficiently take care of all your office tasks.

## Designed for Easy Operation

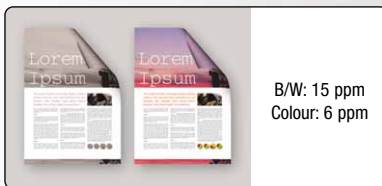
Versatility in a comfortable package, that's what the MP C1500sp is all about:

- ergonomic tilt display improving general usability and accessibility
- innovative design allowing full front accessibility
- simple and fast consumable replacement
- easy handling paper trays for quick paper refills

## The Power of Colour

Colour sells. It's as simple as that. While most of your documents are acceptable in black and white, a touch of colour truly increases their impact and competitive edge.

With the MP C1500sp's innovative colour technology, you can now produce high quality colour presentations, mailings, newsletters and flyers in house!



## Exceptional Media Handling

Create your own reports, handouts and newsletters and take advantage of the MP C1500sp's support for a variety of paper formats from A6 to A3. You can even print on card stock and thick paper up to 220 g/m<sup>2</sup> to create report covers and flyers. In the meantime, you can cut costs and reduce paper waste thanks to the handy duplex functionality. No need for expensive outsourced company stationary; you can now easily produce your own!



## Customised Software Solutions

Using Embedded Software Architecture™, an innovative Java™ (J2ME™) compatible software platform, you can design customised key applications to facilitate your entire document workflow. For more info, please visit [www.ricoh-developer.com](http://www.ricoh-developer.com).



Embedded Software Architecture™

1 x 250 sheets

2 x 500 sheets

## Advanced Business Faxing

- save time and improve image quality by sending fax messages directly from your PC
- forward faxes via e-mail and reduce the distribution of printed faxes
- save costs by sending long distance faxes over the Internet



## Efficient Distribution

- send documents in colour and black & white to any e-mail address in the world (scan to e-mail)
- quickly find any address in your company's address book with LDAP search
- send scanned documents directly to a dedicated network folder (scan to folder for Windows®/scan to NCP for NetWare®)
- conveniently share heavy documents with remote offices via scan to FTP

## State-of-the-art Printing

- limit network traffic and save valuable time with PDF Direct Print
- print high quality images with the genuine Adobe® PostScript® 3™ option
- secure confidential prints and eliminate paper waste: hold print jobs and their settings to release them at a convenient time



The Aficio™MMP C1500SP can hold print jobs you send during the day together with their settings. You simply release them on the device at a convenient time. As a 'virtual mailbox', this function prevents mixed-up output and keeps your prints confidential.

## With the Environment in Mind

Like all Ricoh products, the Aficio™MMP C1500SP reflects Ricoh's commitment to the environment with the usage of toxic free materials\*, limited noise emission and low energy production. With its ultra-low power consumption of maximum 250 W and optional duplexing, this multifunctional all-rounder takes eco care even further.

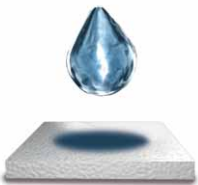
\* In compliance with EU RoHS directive (RoHS: Restriction of Hazardous Substances, effective from July 2006)



# Revolutionise the Way You Handle Your Office Tasks

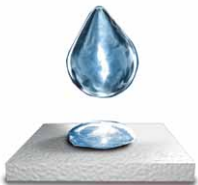
Being able to take care of all your document processing is simply not enough in your fast paced office. You need more to meet those deadlines and convey a professional business image. With the Aficio™MP C1500sp Ricoh offers you that 'more'! Incorporating a variety of technological innovations, this revolutionary device takes you way beyond traditional office document processing!

DYE INK (traditional technologies)



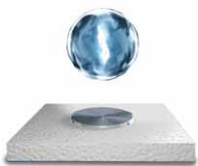
Upon contact with the paper, ink permeates into the fibers and bleeds, blurring the image.

PIGMENT INK (traditional technologies)



Due to its characteristics, ink takes time to dry and fix to the paper.

Unique colour technology: Liquid Gel™



The Liquid Gel™ instantly gelatinises and dries as soon as it comes into contact with the paper. Thanks to the unique colour technology, blurred images and bleeding can be minimised.

## Unique Technology for Impeccable Colour

- **Liquid Gel™**
  - ultra quick drying, water resistant and sunlight resistant prints
  - long lasting high quality images
- **Level Color™mode**
  - colour at virtually the same cost as black and white
  - ideally suited to take care of your daily colour needs
- **Wide Print Head**
  - fast printing
  - clear and solid images at all times
- **Belt Transfer System**
  - consistent high quality across the whole print area
  - optimum duplex printing

## The Top Multifunctional Performer

Think of the space, costs and time you save when you can rely on one compact device to tackle your office tasks in the most efficient way.

The Aficio™MP C1500sp prints, copies, scans and even faxes: an entire wealth of functionalities united in one exceptional office partner.

With speeds of up to 15 ppm in black and white and 6 in colour, your output – simplex or duplex – is ready before you know it. A short warm up time and fast first output speed further reduces waiting time. And with a maximum 1,351-sheet paper capacity, you can continue working without refill interruptions!

## Exceptional Networking

- easy integration into virtually any network environment
- the ultimate in convenient cable free printing with the optional wireless LAN or Bluetooth interface

## Secure Access & Information

Protect your business against possible security threats without compromising on productivity:

- advanced access limitation: Windows® authentication & user authentication
- prevention of industrial spying & information leaks: Data Overwrite Security Unit
- watermark protection to rule out unauthorised copying





# Aficio™ MP C1500SP

## Specifications



### COPIER

Copying process:	On demand piezo inkjet system, pigment based gel (all 4 colours)	
Copy speed:	Black and white:	15 copies per minute (A4, LEF) <sup>1</sup>
	Full colour:	6 copies per minute (A4, LEF) <sup>1</sup>
Resolution:	600 dpi	
Multiple copy:	Up to 99	
Warm up time:	Less than 20 seconds	
First output speed:	Black and white:	Less than 9.7 seconds
	Full colour:	Less than 24 seconds
Zoom:	25 - 400% (in 1% steps)	
Memory:	Standard:	384 MB
	Maximum:	640 MB
	+ optional 40 GB Hard Disk Drive	
Paper input capacity:	Standard:	1 x 250-sheet paper tray
		1 x 100-sheet multi-bypass tray
		1 x 1-sheet bypass tray
	Maximum:	1,351 sheets
Paper output capacity:	Standard:	250 sheets (internal tray)
Paper size:	Paper trays, 1-sheet bypass tray & duplex tray:	A5 - A3
	Multi-bypass tray:	A6 - A3
Paper weight:	Paper tray & duplex tray:	60 - 105 g/m <sup>2</sup>
	Multi-bypass tray:	60 - 162 g/m <sup>2</sup>
	1-sheet bypass tray:	60 - 220 g/m <sup>2</sup>
Dimensions (W x D x H):	550 x 728 x 485 mm	
Weight:	Less than 49.5 kg	
Power source:	220 - 240 V, 50/60 Hz	
Power consumption:	Operation:	Maximum 250 W
	Energy saver mode:	Less than 3.7 W



### PRINTER

Print speed:	Black and white:	15 prints per minute <sup>1</sup>
	Full colour:	6 prints per minute <sup>1</sup>
Printer language:	Standard:	PCL5c, PCL6, RPCL5™
	Option:	Adobe® PostScript® 3™
Resolution:	600 x 600 dpi (2 bit)	
Interface:	Standard:	USB 2.0
		Ethernet 10 base-T/100 base-TX
	Option:	Bi-directional IEEE 1284
		FireWire (IEEE 1394)
		Wireless LAN (IEEE 802.11b)
	Bluetooth	
	USB Host I/F	
Network protocol:	TCP/IP, IPX/SPX, SMB, AppleTalk	
Supported environments:	Windows® 95/98/Me/NT4.0/2000/XP/Server 2003	
	Novell® NetWare® 3.12/3.2/4.1/4.11	
	5.0/5.1/6/6.5	
	UNIX Sun® Solaris 2.6/7/8/9/10	
	HP-UX 10.x/11.x/11iv2	
	SCO OpenServer 5.0.6/5.0.7	
	RedHat® Linux 6.x/7.x/8.x/9.x/Enterprise	
	IBM® AIX v4.3/5L v5.1/5L v5.2/5.3	
	Macintosh 8.6 or later (OS X Classic)	
	Macintosh X v10.1 or later (native mode)	



### SCANNER

Scan speed:	Maximum 42 originals per minute (MH, A4, B/W)
Resolution:	600 dpi
Original size:	A5 - A3
Output formats:	PDF/JPEG/TIFF
Bundled drivers:	Network, TWAIN
Scan to e-mail:	SMTP, TCP/IP
Destination addresses:	Maximum 300 per job
Stored destination addresses:	Maximum 150
Address book:	Via operation panel or LDAP
Scan to folder:	SMB, NCP or FTP protocol (with login security)
Destination:	Maximum 50 folders per job



### SOFTWARE

- SmartDeviceMonitor™
- Web SmartDeviceMonitor™
- Web Image Monitor
- DeskTopBinder™ Lite



### FAX (option)

Circuit:	PSTN, PBX	
Compatibility:	ITU-T (CCITT) G3	
	ITU-T (T.37) Internet fax	
	ITU-T (T.38) IP fax	
Modem speed:	Maximum 33.6 Kbps	
Resolution:	Standard/detail:	200 x 100/200 dpi
Compression method:	MH, MR, MMR, JBIG	
Scanning speed:	1 second (200 x 100/200, A4/SEF)	
Memory capacity:	Standard:	4 MB
Memory backup:	Yes	

### OTHER OPTIONS

Platen cover, 30-sheet Auto Document Feeder, 50-sheet Auto Reverse Document Feeder, 1 x 500-sheet paper tray, 2 x 500-sheet paper trays, Accessibility handle for optional paper trays, Duplex unit, Cabinets, Adobe® PostScript® 3™, Function upgrade option (including 40 GB Hard Disk Drive), Bi-directional IEEE 1284, FireWire (IEEE 1394), Wireless LAN (IEEE 802.11b), Bluetooth, USB Host I/F, Camera Direct Print card, Data Overwrite Security Unit, Copy Data Security Unit, Professional software solutions

<sup>1</sup> Speed depends on the type of document.

For availability of models, optional apparatus and software, please contact your local Ricoh representative.



Adobe® PostScript® 3™



Our earth. Our tomorrow



Bluetooth™



Embedded Software Architecture™

ISO9001: 2000 certified  
ISO14001 certified

Ricoh believes in conserving the earth's precious natural resources.

All brand and/or product names are trademarks of their respective owners.

Specifications and external appearance are subject to change without notice. The colour of the actual product may vary from the colour shown in the brochure.

Copyright © 2006 Ricoh Europe B.V. All rights reserved. This brochure, its contents and/or layout may not be modified and/or adapted, copied in part or in whole and/or incorporated into other works without the prior written permission of Ricoh Europe B.V.

# RICOH

For more information, please contact:

RICOH EUROPE B.V.  
P.O. Box 114, 1180 AC Amstelveen,  
The Netherlands  
Phone: +31 (0)20 54 74 111  
Fax: +31 (0)20 54 74 222

[www.ricoh-europe.com](http://www.ricoh-europe.com)